

ESCADA DESLIZANTE

Telescopic sliding ladder

Sliding ladder ideal for accessing construction bungalows, landfills, tanks, among others. With front exit and safe assistance during descent, thanks to the retractable handrails. Millimetric height adjustment through a system by fixing the step. Ladder equipped with 2 suspension hooks.

TECHNICAL CHARACTERISTICS

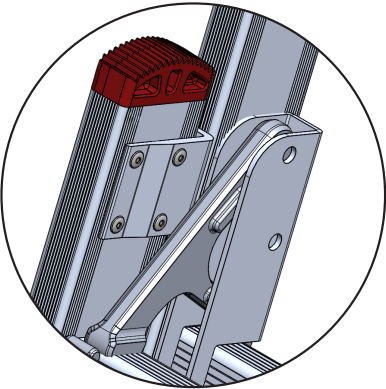
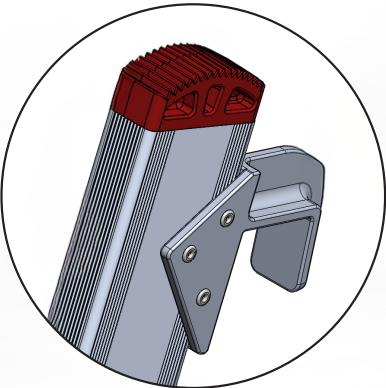
- 50cm front entrance;
- Steps: 4.8cm deep;
- Distance between steps: 25cm;
- Handrails: 1.00m high;
- Capacity: 150 kg;






EQUIPMENT

- 2 integrated 1m retractable handrails;
- 2 suspension hooks (Ø6cm);
- Non-slip feet

OPTIONAL

- Crossbar



						KG
	m	m	m	m		
2 x 8	2.40 - 3.40	2.57	3.69	0.55		19.00
2 x 9	2.65 - 3.95	2.85	4.25	0.55		21.00
11 + 12	3.43 - 5.25	3.69	5.65	0.55		26.00

